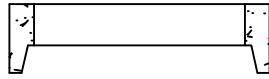


FRAME AND COVER:

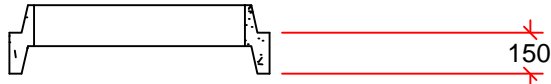


ADJUSTING RINGS:

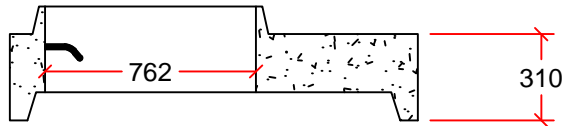


ADJUSTING RINGS
AVAILABLE IN 50mm, 75mm,
100mm, 125mm, AND 150mm

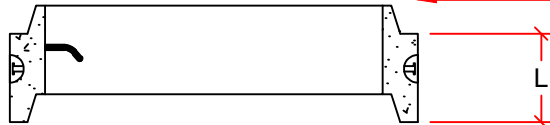
RISER:



REDUCER:

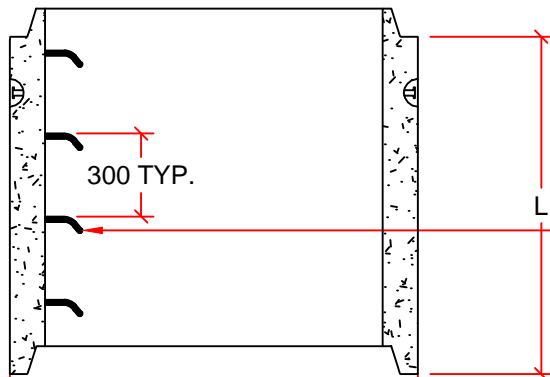


SINGLE OFFSET JOINT WITH
SUPERSEAL GASKET



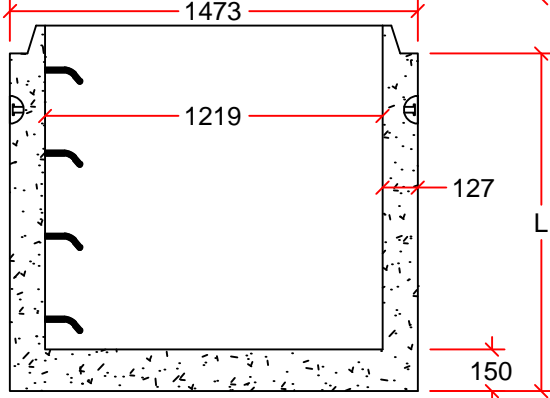
RISERS AVAILABLE IN
0.31m, 0.46m, 0.61m, 0.92m,
1.22m, AND 1.83m HEIGHTS

RISERS:



19mm Ø RUNGS
@ 300 O/C

CONCRETE FLOOR CAN
BE:
FIELD CAST: TYPE A
OR
PRECAST: TYPE A1
OR
PREBENCHED



BASES AVAILABLE IN
0.46m, 0.61m, 0.92m,
1.22m, AND 1.83m HEIGHTS

DRAWN BY:	JULIAN SIGURDSON
SCALE:	NTS
DATE:	JULY 9, 2014
DRAWING #:	MANHOLE DETAILS
REVISION #:	REV. 1
CHECKED BY:	TYSON DYCK

STANDARD MANHOLE DETAIL

DIMENSIONS IN mm

INLAND
Pipe

2494 FERRIER ST. WINNIPEG, MB.
PH: 204 334-4300 FAX: 204 334-7957